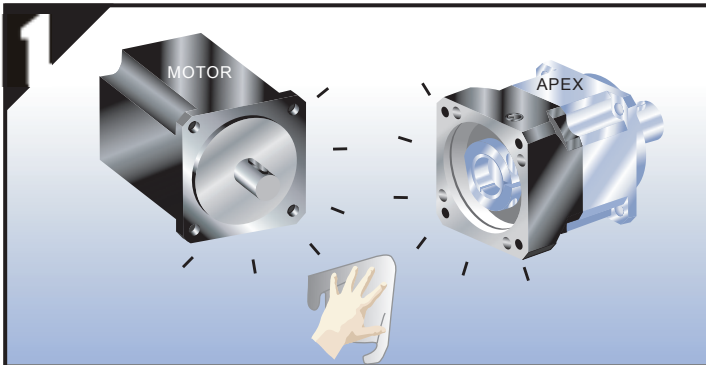
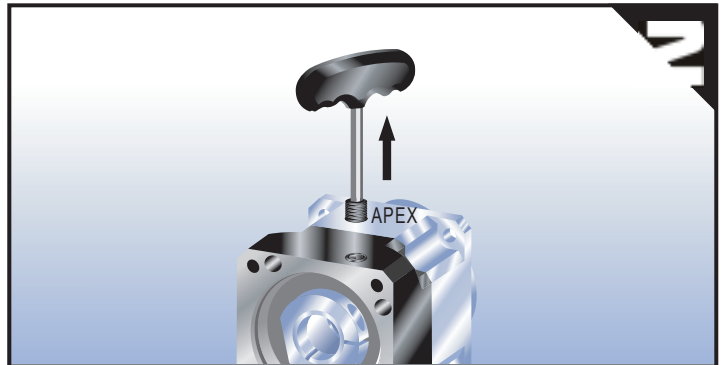




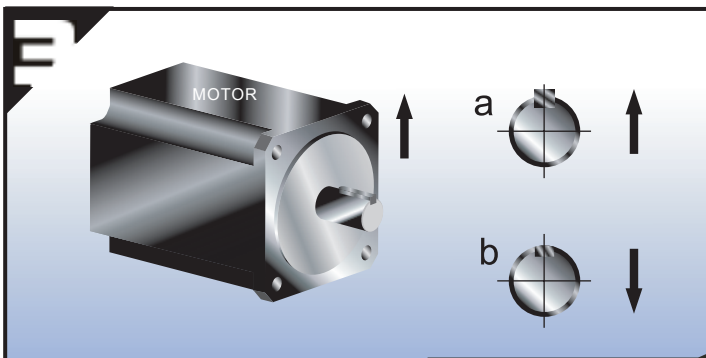
MOUNTING INSTRUCTION



Double-check the motor and gearbox size.
Clean the mounting surface.



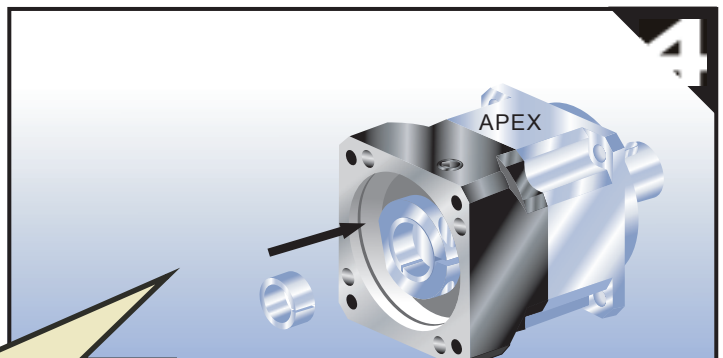
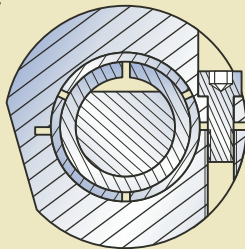
Remove the plug on the adapter plate.
Rotate the set collar till the bolt is line up.



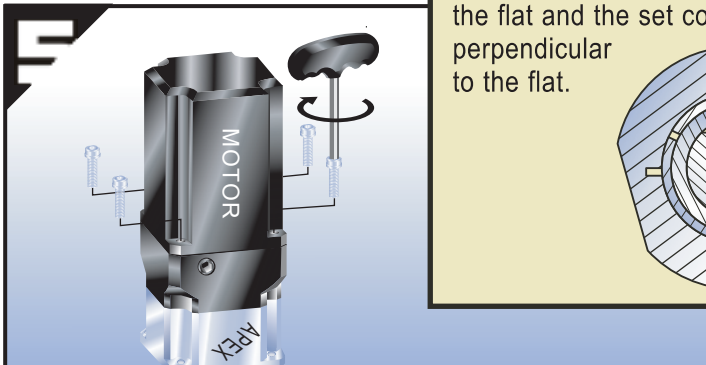
a. Remove motor key.
b. Insert balance key.

Correct installation.

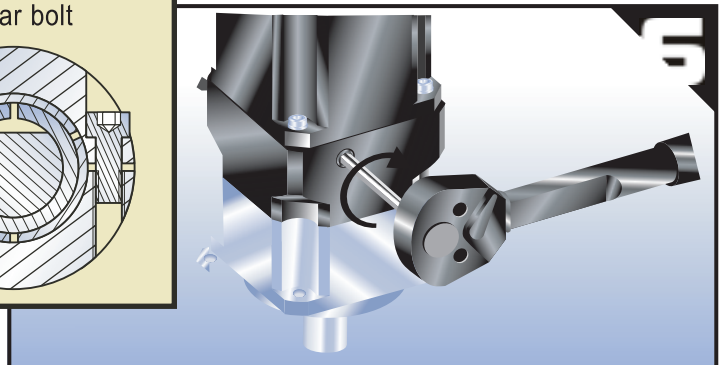
When installing on **flatted shafts**, be sure to align the collet gap over the flat and the set collar bolt perpendicular to the flat.



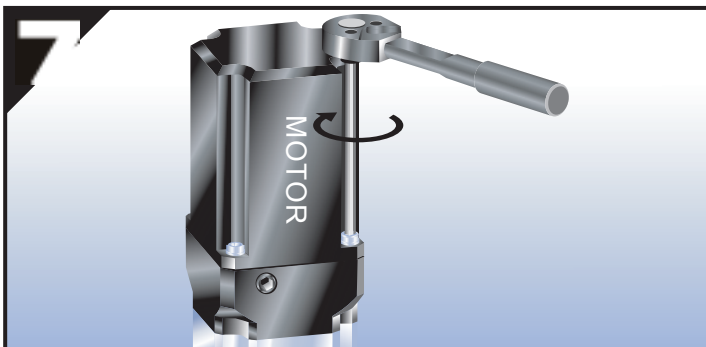
Check motor shaft size and insert bushing if necessary.



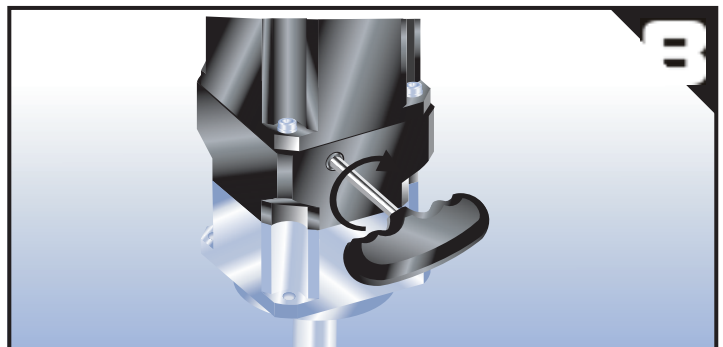
Set at vertical position. Tighten the mounting bolts (including washer) in 1~4 order with wrench to 5% specified torque. (See Table 1)



Tighten the set collar bolt with torque wrench to specified torque. (See Table 2)



Tighten the mounting bolts in 1~4 order with torque wrench to specified torque. (See Table 1)



Tighten back the screw plug.

Table 1 Tightening Torque Recommended for Motor Mounting Bolt

Bolt Size	Width Across Flats	Strength 8.8 Tightening Torque		Strength 10.9 Tightening Torque		Strength 12.9 Tightening Torque	
	[mm]	[Nm]	[In-lbs]	[Nm]	[In-lbs]	[Nm]	[In-lbs]
M3 x 0.5P	2.5	1.3	12	1.8	16	2.1	19
M4 x 0.7P	3	3	27	4.1	37	4.9	44
M5 x 0.8P	4	6.1	55	8.2	73	9.8	87
M6 x 1P	5	11	98	14	124	17	151
M8 x 1.25P	6	25	222	34	302	41	364
M10 x 1.5P	8	49	434	67	594	80	709
M12 x 1.75P	10	85	753	116	1028	139	1232
M14 x 2P	12	137	1214	186	1648	223	1976
M16 x 2P	14	210	1860	286	2534	343	3038

Table 2 Tightening Torque Recommended for Set Collar Bolt

Gearbox Size		Motor Shaft Dia.	Bolt Size	Width Across Flats	Tightening Torque	
		[mm]	[mm]	[mm]	[Nm]	[In-lbs]
AB042 AF042 AE050	1 stage	≤11	M3 x 0.5P x 8L	2.5	2.1	19
	2 stage	≤11	M3 x 0.5P x 8L	2.5	2.1	19
AB060 AF060 AE070	1 stage	≤14	M4 x 0.7P x 12L	3	4.9	44
	2 stage	≤11	M3 x 0.5P x 8L	2.5	2.1	19
AB090 AF075 AE090	1 stage	≤19	M5 x 0.8P x 14L	4	9.8	87
	2 stage	≤14	M4 x 0.7P x 12L	3	4.9	44
AB115 AF100 AE120	1 stage	≤32	M6 x 1P x 16L	5	17	151
	2 stage	≤19	M5 x 0.8P x 14L	4	9.8	87
AB142 AF140 AE155	1 stage	≤38	M8 x 1.25P x 20L	6	41	364
	2 stage	≤32	M6 x 1P x 16L	5	17	151
AB180 AF180 AE205	1 stage	≤48	M10 x 1.5P x 25L	8	80	709
	2 stage	≤38	M8 x 1.25P x 20L	6	41	364
AB220 AF220 AE235	1 stage	≤55	M12 x 1.75P x 30L	10	139	1232
	2 stage	≤48	M10 x 1.5P x 25L	8	80	709

Note: Holding torques must be bigger than values shown above. Bolts can be tightened up to 20% higher for increased holding torques.



APEX DYNAMICS, INC.

Tel : 886-4-24650219 / Fax : 886-4-24650118

E-Mail : sales@apexdyna.com / Web : www.apexdyna.com

NO. 10, Keyuan 3rd Rd., Situn District, Taichung City 40763, Taiwan(R.O.C)